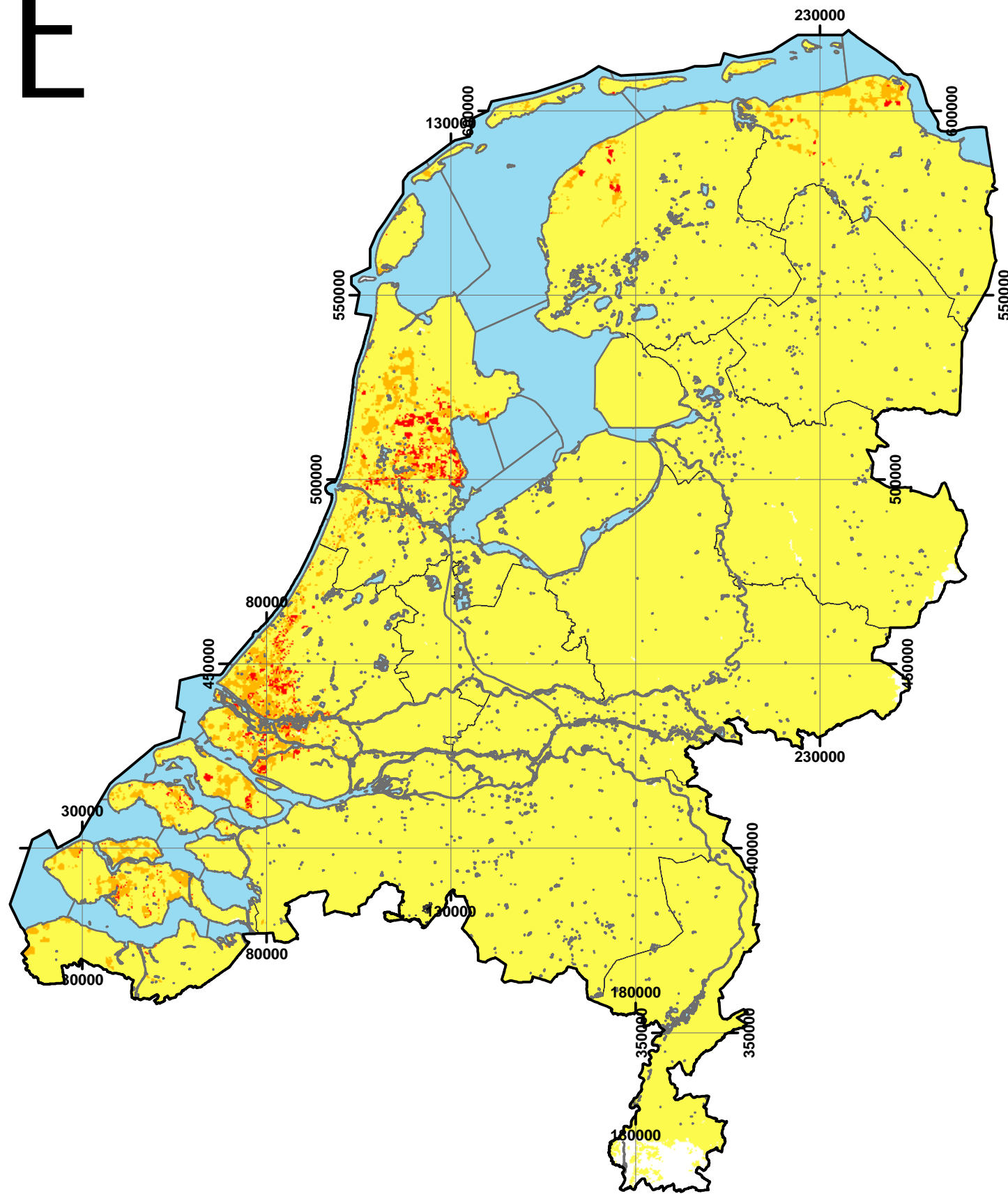




E










**Compactie van de ondergrond.
Eindzetting na opbrengen
16 kN/m²
(ca 1m droog zand;
methode Koppejan)**

-  water
-  provinciegrens

15-16 m-MV

Compactie (m)

-  0 - 0.00001
-  0.00001 - 0.005
-  0.005 - 0.01
-  0.01 - 0.1
-  0.1 - 0.3
-  0.3 - 0.5
-  0.5 - 1