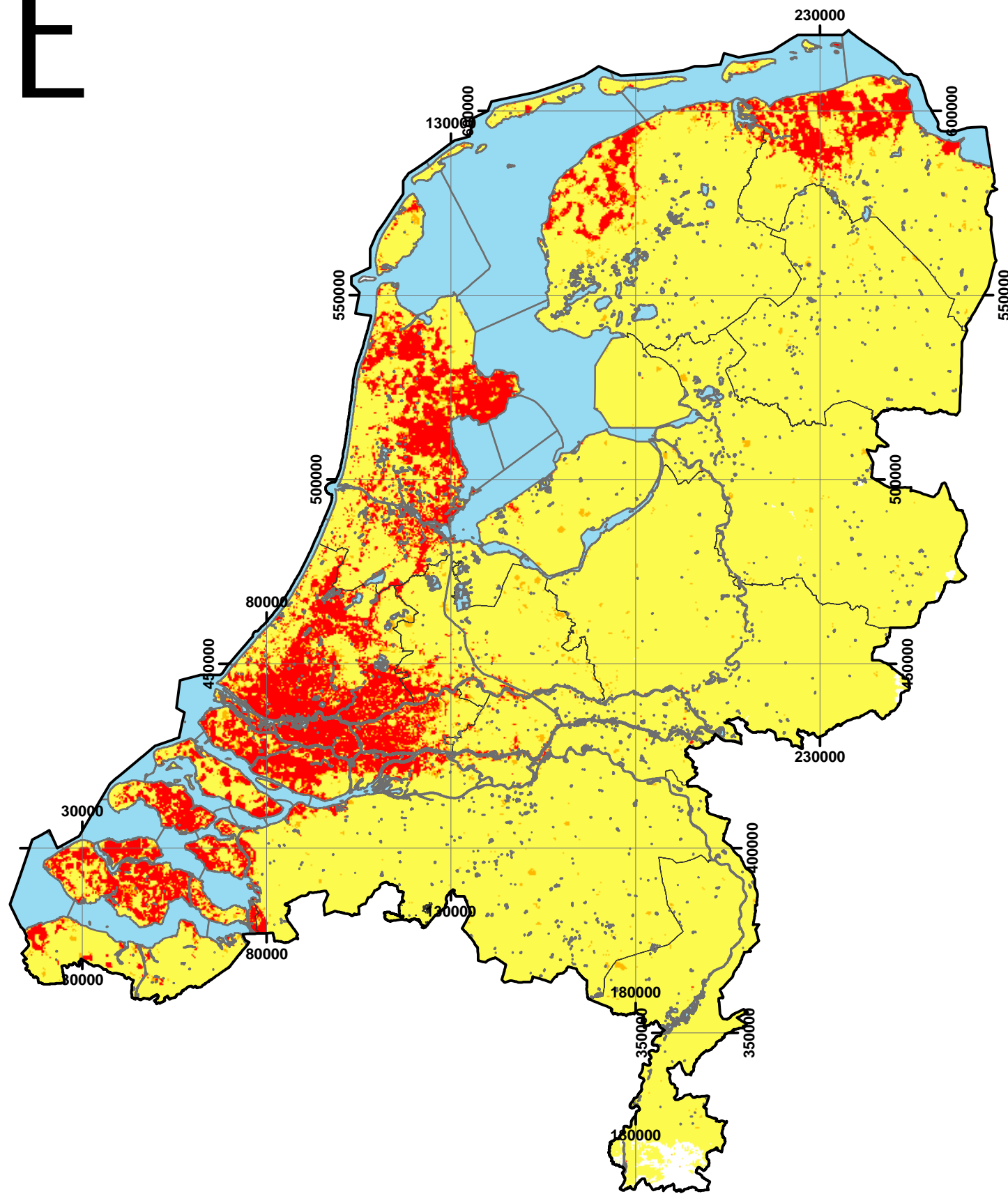




E










**Compactie van de ondergrond.  
Eindzetting na opbrengen  
16 kN/m<sup>2</sup>  
(ca 1m droog zand;  
methode Koppejan)**

-  water
-  provinciegrens

**8-9 m-MV**

**Compactie (m)**

-  0 - 0.00001
-  0.00001 - 0.005
-  0.005 - 0.01
-  0.01 - 0.1
-  0.1 - 0.3
-  0.3 - 0.5
-  0.5 - 1